



Driving aids
for successful driving

CAROSPEED®
menox



INVENTIONS FOR QUALITY OF LIFE



The Carospeed Menox Hand Control

The Carospeed Menox Hand Control is specifically designed to give physically limited drivers the benefit of control and ease when driving a vehicle. Driving becomes an easy and enjoyable experience with Carospeed Menox.

The Carospeed Menox's design is simple and durable. Minimal hardware is needed for the installation leaving the driver with extensive leg room. Likewise Menox is not in the way of knee air bags. With no protruding bars or bolts, access in and out of the car is trouble-free.

Easy and multi-purpose

When choosing the multi-function grip, the driver maximizes the ability to control the car operating headlights, turn indicators, wipers or wiper/washer and horn from the same central place, the Carospeed Menox Hand Grip. This way, any function can be used at the same time as the brakes and accelerator.





Safe and Stylish

Thanks to Menox's advanced design, each control is ergonomic, conforming to a person's natural hand-wrist-arm motion. The function buttons are situated in a safe place and engineering has simplified the range of the Carospeed Menox Hand Control; pushing forward to brake, pulling back to accelerate.

Each Carospeed Menox handle comes fitted with a brake latch to hold the brake pedal down. In this way hands are free at traffic lights to change gears or tune the radio. Cruise control and horn can be operated from this same rocker switch. The cruise control frees the hand reducing muscle fatigue when driving at highway speed.

Menox hand controls are designed to compliment all vehicles interiors. From our product selection you will find suitable colours for sedans to vans, as from sports to collector cars upholstery. This allows for Carospeed Menox hand control to go unnoticed by blending into the car's interior design.



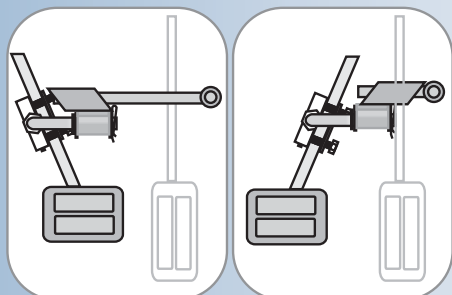
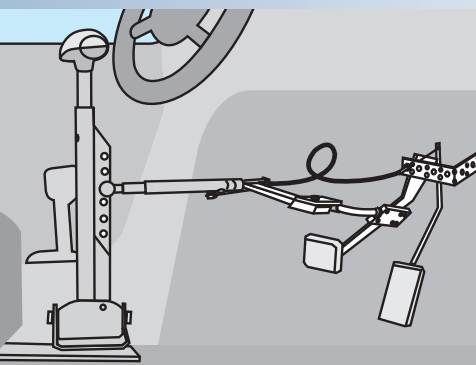
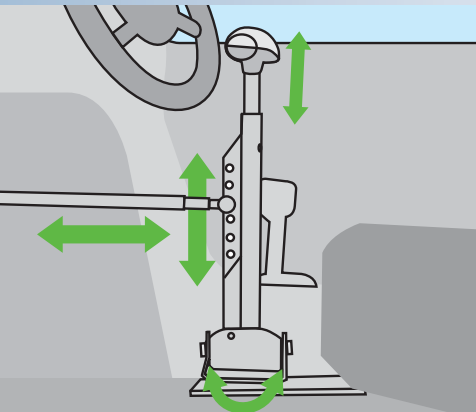
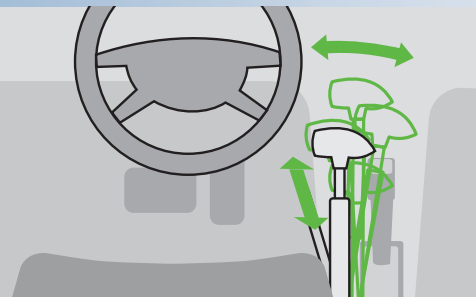
Hill Holder

Every Menox hand control is equipped with a Hill Holder. When engaged, the brake latch keeps the brake pedal in a braking position. This function eases the shifting of gears allowing the driver to freely shift from park to drive keeping the brake applied.



Cruise control

The cruise control can be installed to work simultaneously with the vehicle's own cruise control system or be inserted as a totally new function.



The Carospeed Menox Hand Controls

Adjustability for individual needs

It is only obvious that drivers have many different driving positions. One may want to hold the steering wheel the same time as accelerating, while another may want to rest their elbow on the console and use the control with the palm of their hand.

The universal Carospeed Menox hand control can be installed to both the right and left side of the car. The Menox hand control can be easily adjusted to every individual driver's needs. Likewise features can be added to the hand control at a later date as the driver deems necessary.

The grip can be vertically adjusted 15cm (6 in) and the shaft can be tilted 95-105 degrees. Each personal adjustment; height of the grip and the right momentum can be achieved for each individual. The range of motion is also amazingly smooth. The power transmission tube allows for the sliding front/back personal adjustments of 7cm (3 in). The tube going to the pedals is smartly equipped with a 7cm (3 in) threaded adjustment. While the ball and fork joint allow for the power transmission tube to be installed as close to the center console as possible. The significance of all of these personal adjustments equal more leg room for the driver.

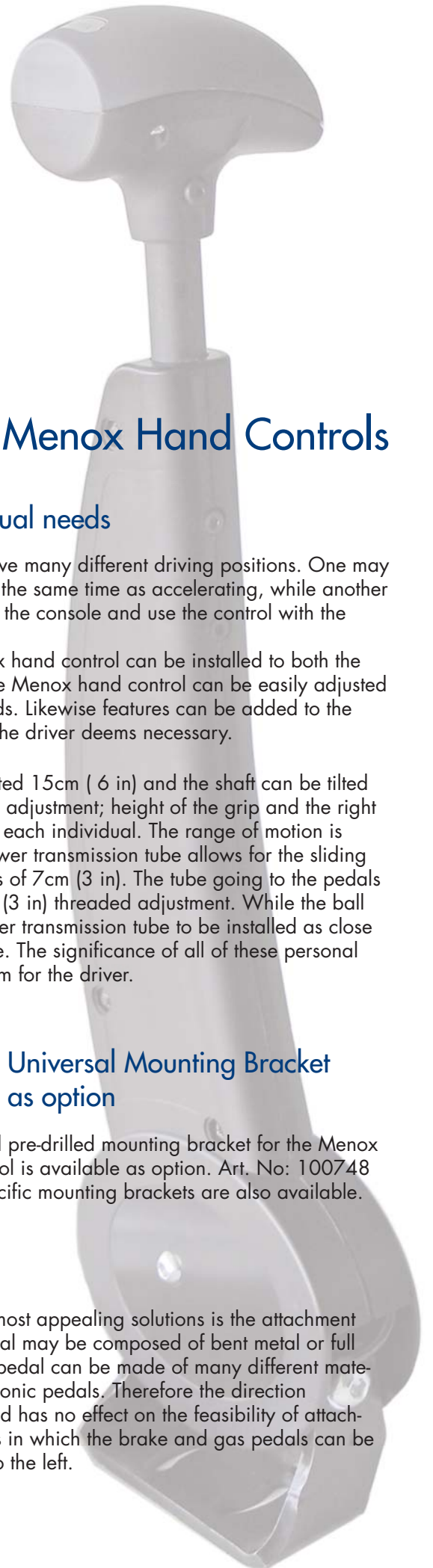


Universal Mounting Bracket as option

A universal pre-drilled mounting bracket for the Menox hand control is available as option. Art. No: 100748 Model specific mounting brackets are also available.

Pedal attachments

One of the Carospeed Menox most appealing solutions is the attachment of the pedals. A cars brake pedal may be composed of bent metal or full metal. Likewise the accelerator pedal can be made of many different materials, from metal to plastic electronic pedals. Therefore the direction in which the accelerator is turned has no effect on the feasibility of attachment. There are dozens of ways in which the brake and gas pedals can be attached, even when bending to the left.





Carospeed Menox Standard

Delivered with a grey handle and the slim designed hard cover in black plastic.

Uses Product Art. 102013 LHD or 102014 RHD



Build your own Carospeed Menox

Delivered without the upper cover for the handle and without the lever cover. Choose your own grip and cover to suit your personal style.

Uses product Art. 102064 LHD or 102065 RHD



The Carospeed Menox Options

Multifunction as option

Add an **8-way** Multifunction Relay box: 102057 for the primary electrical functions. The box also provide ability to to add interval, speed, automatical stop and hazzad to the electrical functions.

The Multifunction buttons installed inside the handle.



Features



Your own choice

Menox hand controls are a personal solution just for you and can be tailored according to the drivers individual needs and desires.



Carospeed Menox Gasholder as option

This is an additional feature, for vehicles that don't have a cruise control and can easily be added to all models. The Gasholder Art: 102024, keeps the gas in place but allows for acceleration and deceleration. The Gasholder does not interfere with the ability to brake.

Steering knobs



The adapter

the Menox adapter with quick release fastening for the different knob models.

Art. 102145

Model Low

The low design allows for the fingers to be in constant reach of the turn signals, cruise control, etc. at the same time. Available in 4 colour choices.



Model Round

The round knob is available in two dimensions; 50 mm and 40 mm. Available in 4 colour choices.



Model Ergo

Oval shaped ergonomic design. Available only in grey. Art. 102054



Model M-Standard

Uses the same handle as the Hand Control, for individuals seeking compatibility with the Hand Control.

Available in 4 colour choices.



2- and 3-pin

A 2-pin (art. 102058) or a 3-pin (art. 102059) steering device for individuals with impaired hand function. Can easily be reshaped to fit the hand.

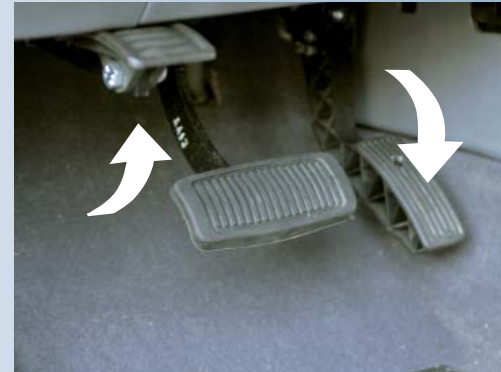
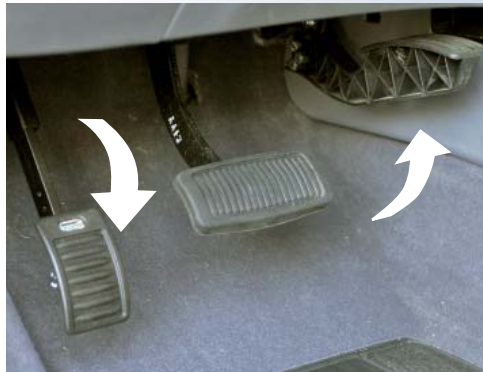


Left Foot Accelerator

Flip-Up model

The Menox Left foot accelerator (art. 102044) and the original accelerator are equipped with a hinge allowing for the desired pedal to be gently pushed into place while the other can be neatly tucked away.

The force applied to the original accelerator is transferred through a high quality Teflon coated cable.



Quick Release model

The Menox Left foot accelerator Quick Release (art. 102045) was developed to control the cars original accelerator with the left foot. The Left foot accelerator is compatible with vehicles driven from either the right or left side of the vehicle.

The Menox pedal is universal and can be installed into most makes and models.

When not in use, the left foot accelerator must be removed from the driver's side floor space so that it will not interfere when other individuals use the vehicle.



Pedal Extensions



◀ The Stamp Extension

The Menox Stamp Extension, brings the original pedals 10-30 cm (4-10 in) closer and can be installed into both automatic (art. 102049) and manual (art. 102050) vehicles. Adjustments can be made for distance, height, and the desired space between pedals. The Stamp Extension is fit with a quick release, to be easily removed. The package includes the raised surface, installable at height of 5-20 cm (2-8 in).



◀ The Mini Stamp

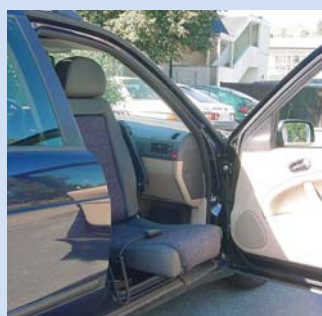
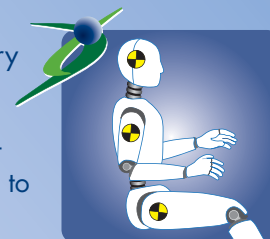
The Menox Mini Stamp provides an extension of 3-9 cm (1-3 in). The ease of movement allows for the pedal to be lowered into place and tucked away when not in use. Models are developed for both automatic (102047) and manual (102048) vehicles.

Pedal Guard

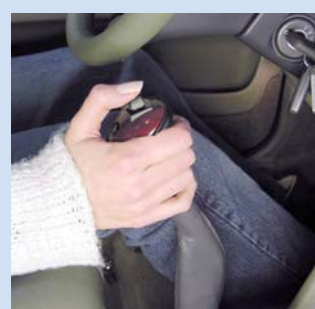


▲ The Menox Pedal Guard (art. 102046) protects the original pedals from being engaged when a Hand Control is used. It has a floor-mounted quick release, for a quick removal. Maximum force exerted on the Pedal Guard should not exceed 50 Kg.

The Autoadapt test laboratory
is accredited according to
ISO/IEC 17025-2005
The Autoadapt management
system is certified according to
ISO 9001:2000



Autoadapt
for your
independence



www.autoadapt.com

Autoadapt AB

Åkerivägen 7, S-443 61 Stenkullen, Sweden
Phone: +46 302 254 00
E-mail: contact@autoadapt.se

Autoadapt UK Ltd

Unit 1 Windsor Industrial Estate Rupert Street, Aston,
Birmingham B7 4PR, UK
Phone: +44 (0)121 333 5170
E mail: contact@autoadapt.co.uk
www.autoadapt.co.uk

