

# menox

Left Foot Accelerator

A.305

Manual



Contents: Section	Subject	Page
1	Table of Contents	2
2	Introduction	2
3	General Information	2
4	Left Foot Accelerator	2
5	Instructions for use	3
6	Installation Instructions	3
6.1	Installation sequence	4
7	Maintenance	5
	Parts List	6
8	Warranty + Blown up picture	7
9	Certification	8



**Congratulations! You have purchased a Menox Left Foot Accelerator. We wish you pleasant and safe driving experiences.**

## 2 Introduction

This instruction manual must be read and its instructions understood before installing and using the Menox left foot accelerator. Keep this manual for later use. If the manual is not correctly filled in, the manufacturer is released of liability. The manufacturer is not responsible for incorrect installation or wiring connections. For safety reasons, only Turvax Oy or a trained and authorized installer may install and service this product.

## 3 General Information

The Menox left foot accelerator is a driving aid developed for disabled drivers who do not have use of their right leg while driving. Menox is a safe and tested product. It can be installed into automatic vehicles and adjusted according to the driver's needs.

This Left foot Accelerator is a Floor-mounted quick release.

## 4 Left foot Accelerator

The Menox Left foot Accelerator was developed to control the cars original accelerator with the left foot. The Left foot accelerator is compatible with vehicles driven from either the right or left side of the vehicle.

The Menox pedal is universal and can be installed exceptionally into most makes and models.

When not in use, the left foot accelerator must be removed from the Driver's side floor space so that it will not interfere when other individuals use the vehicle..

## 5 Instructions for use

The left foot accelerator enables for the normal use of the accelerator with the left foot. The motion of the pedal must be the same as in the original pedal.

In the case on an accident, the left foot accelerator can not be used without the inspection of dealer or manufacturer

If the device is for some reason too stiff or loose, immediately contact the installer. When exiting the car be careful that you don't come into excessive contact with the pedal.

Only persons authorized can use the left foot accelerator. After installation, the vehicle must be inspected.

\*In a normal installation of the Left foot Accelerator (LFA), lift the quick release pin as in Fig.1, slide the metal plate mounted on the floor through the same size hole on the bottom portion of the LFA As in Fig.2. The pedal guard will be facing you. Slide the LFA forward until you hear a click and see that the pin has locked. Snugly pull the LFA to ensure that it is in place. Place the Rod, extending from the pedal guard into place on the firewall. Push firmly down to ensure that it is in place. To remove the LFA, pull the quick release pin up and slide the LFA out.

In the case where the floor is slanted the LFA will use a different method of fastening the LFA. The assembly plate on the floor will have bolts. Place the LFA on the plate so that the holes on the bottom of the LFA fit into the bolts on the assembly plate. Slide the LFA back and the pin will drop into the hole and lock into place. To remove the LFA, pull the quick release pin, slide the LFA forward and take out.

## 6 Installation instructions

Before beginning the installation process check that the product has not been damaged in delivery. Read the installation instructions fully before installation so that you can establish a clear picture of how the device works.

Make sure that the vehicle is properly secured preventing it from rolling during installation.

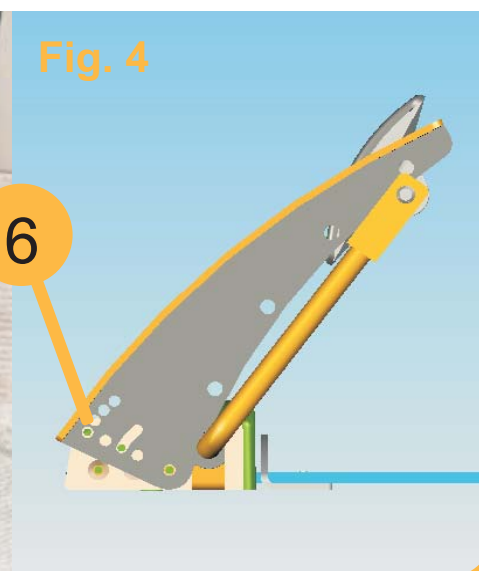




Fig. 5



Fig. 6

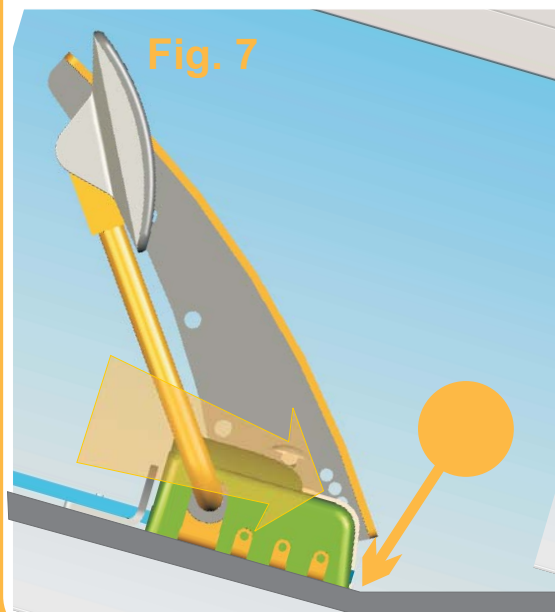


Fig. 7

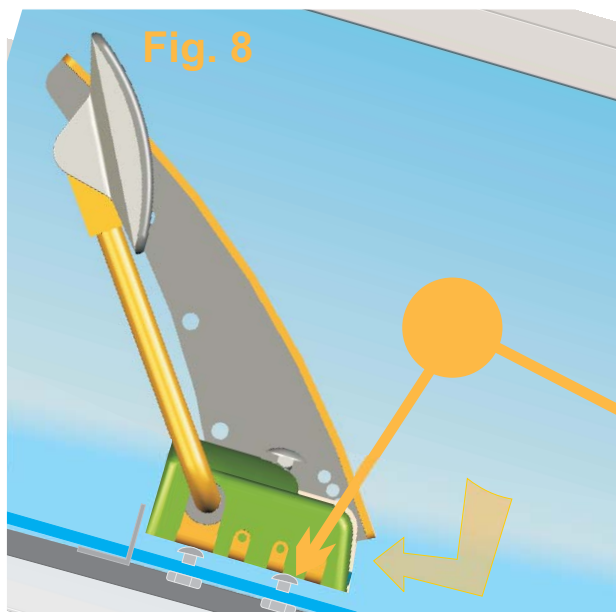


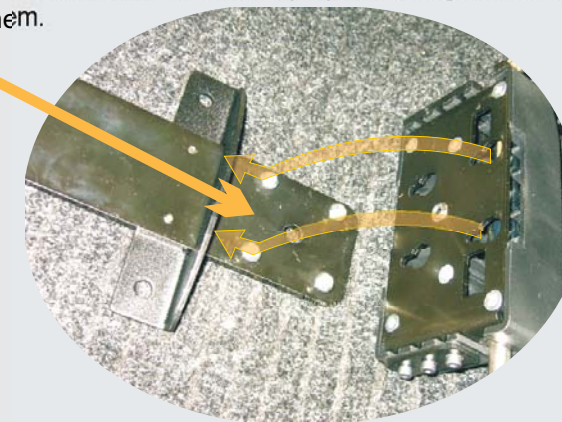
Fig. 8

## 6.1 Installation sequence

6.1.1. Determine where to install the device. Once a position is found, ensure that the Gas Rod rolls smoothly on the OEM Accelerator and the LFA Pedal has enough room to move. Ensure that the feet will rest nicely on the floor as in Fig. 5

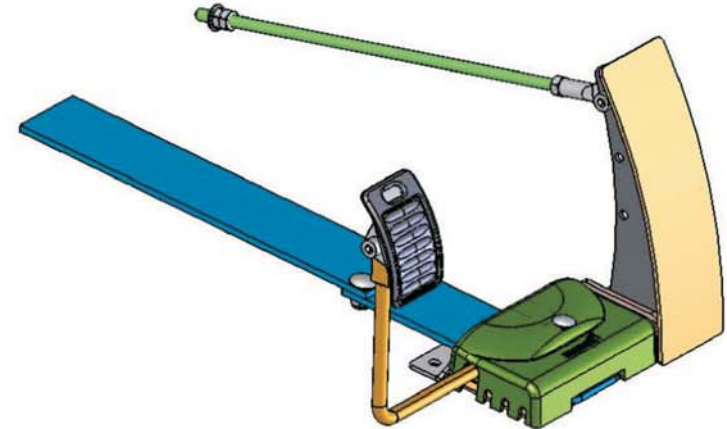
6.1.2. After you have determined the position of the LFA, You must choose the way of mounting the LFA on the assembly plate. The normal installation is to mount the LFA by sliding it into the slot. There are however some vehicles that have a sloped floor and do not allow for the LFA to slide out as in Fig.7. In this case there are four bolts and nuts included in the package. Fasten these to the Plate so that the bolts are on the upperside of the plate. You will need to leave a space of 3,1mm between the plate and the bottom side of the head of the bolt. Also there is an extension bolt found in the package for the Quick release pin. Remove the Allen Screw from the bottom of the quick release pin and add the supplied bolt. Hold the Top of the pin and tighten the bolt into place. Now the LFA is ready for use on the sloped floor. The LFA has also been designed so that the plastic base is interchangeable. You can mount the Pedal guard and the LFA pedal on either side of the Plastic Base. This may ease the removal of the LFA in the situation where the LFA sits on top of the assembly plate.

6.1.3. Attaching the Mounting bracket to the Firewall. Look for suitable bolts to mount the bracket under. If you do not wish to mount to the Firewall nor use the assembly plate extension, the assembly plate can be bolted to the floor. Also the 2 holes included on the assembly T-plate can be used to add stability by mounting bolts through them.

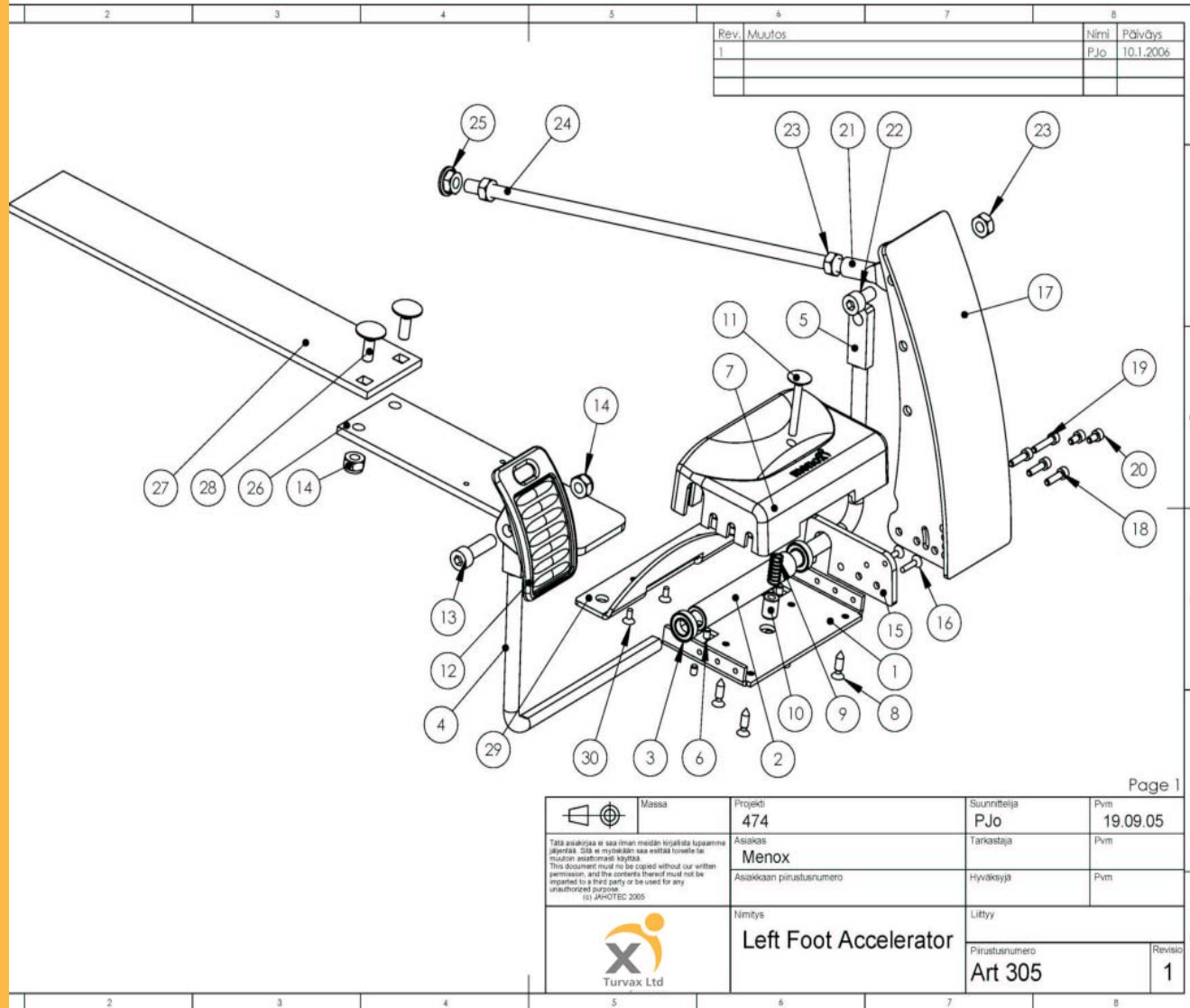




30	Kuusiokoloruuvi		DIN 7991		M4x8	2
29	Fastening Part	305_100				1
28	Lukkoruuvi		DIN 603		M8x20	2
27	Front Fastening Plate 2	305_110				1
26	Front Fastening Plate 1	305_090				1
25	Laippamutteri Würth 1394-8				M8	1
24	Threaded Rod M8x330	305_080				1
23	Kuusiomutteri		DIN 913		M8	3
22	Kuusiokoloruuvi		DIN 912		M8x16	1
21	Silmukkamutteri Sormat M8					1
20	Kuusiokoloruuvi		DIN 912		M4x8	2
19	Kuusiokoloruuvi		DIN 912		M4x20	1
18	Kuusiokoloruuvi		DIN 912		M4x16	3
17	Metal Pedal Guard	Art 305_070				1
16	Kuusiokoloruuvi		DIN 7991		M4x16	2
15	Adjust Plate	305_060				1
14	Lukitusmutteri		DIN 985		M8	3
13	Kuusiokoloruuvi		DIN 912		M8x30	1
12	Menox Pedal					1
11	Lukkoruuvi		DIN 603		M6x40	1
10	Lock Shaft	305_050				1
9	Compression Spring Lesjofors 1311					1
8	Ruuvi Würth 0166 518					6
7	Body	305_040				1
6	Pidätinruuvi		DIN 913		M5x6	4
5	Lever R	305_120				1
4	Lever L	305_030				1
3	Ball Bearing 6800ZZ_10x19x5					2
2	Spacer	305_020				1
1	Metal Frame	305_010				1
OSA	NIMITYS	PIIR_NO	STANDARDI	MATERIAALI	MITAT	KPL



 Massa	Projekti <b>474</b>	Suunnittelija <b>PJo</b>	Pvm <b>19.09.05</b>
	Asiakas <b>Menox</b>	Tarkastaja	Pvm
Tämä asiakirja ei saa ilman meidän kirjallista lupamme jäljentää. Sitä ei myöskään saa esittää toiselle tai muualla asiattomasti käyttää. This document must not be copied without our written permission, and the contents thereof must not be imparted to a third party or be used for any unauthorized purpose. (c) JAHOTEC 2005	Asiakkaan piirustusnumero	Hyväksyjä	Pvm
	Nimitys <b>Left Foot Accelerator</b>	Liitty	
 Turvax Ltd	Bill of materials		Revisio <b>1</b>
	Piirustusnumero <b>Art 305</b>		



## 8 Menox warranty

### 8.1 Duration and terms of warranty

#### 8.1.1 Duration of warranty

a) We guarantee a warranty of two (2) years for the product.

#### 8.1.2 Extent

Our warranty covers all faults occurring during manufacturing and materials.

### 8.2 Terms

The warranty is valid provided that:

- a) Installation is performed by an authorized mechanic.
- b) A warranty repair be negotiated by the manufacturer/dealer of the product prior to action of repair
- c) The use, maintenance and physical conditions in which the product has been used have been consistently normal and the operation instructions have been followed and scheduled servicing has been performed.

### 8.3 Proper actions in warranty cases

In warrant cases, always contact a garage or mechanic authorized to perform the warranty repair.

8.3.1 The defective product is returned to the manufacturer and after they have examined it, the repaired or new product is sent to the customer.

8.3.2 In the case that there is need for compensation for work, it must be negotiated with the manufacturer. Compensation can amount to a maximum of one (1) hour at the regular rate of the garage/mechanic. Compensation is paid as a reduction from the purchase bill/receipt.

8.3.3 The warranty does not cover indirect costs such as shipping or travel expenses or malfunctions caused by normal wear.

### 9.1 Manufacturer's Certificate

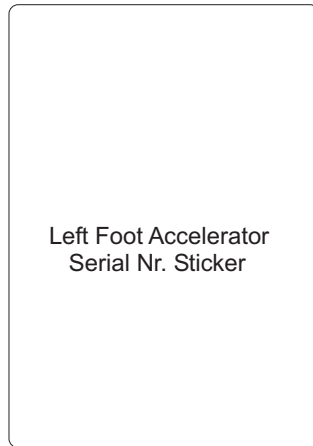


I certify that the Menox Left Foot Accelerator has been designed and manufactured in Turvax Oy, Kempele Finland. Throughout the design and manufacturing, special attention has been placed on safety and ease of use of the product. Menox Left Foot Accelerator's are manufactured in accordance with Finnish guidelines (703/98) 103§, ISO/TC22/WG4 and EU directives (74/60/ETY, 78/632/ETY).

Respectfully yours,

*Juha Paananen*

CEO



Left Foot Accelerator  
Serial Nr. Sticker

Manufacturer



**Turvax Ltd**

Tarjusojantie 9  
FIN-90450 KEMPELE  
FINLAND  
Tel. +358 8 513 624  
Fax +358 8 5563 803  
e-mail: [menox@menox.org](mailto:menox@menox.org)



For successful driving

[www . menox . org](http://www.menox.org)