

# Driving aids for successful driving

**auto**<sup>®</sup>  
**ADAPT**  
for your independence



INVENTIONS FOR QUALITY OF LIFE



## The Carospeed Menox Hand Control

The Carospeed Menox Hand Control is specifically designed to give physically limited drivers the benefit of control and ease when driving a vehicle. Driving becomes an easy and enjoyable experience with Carospeed Menox.

The Carospeed Menox's design is simple and durable. Minimal hardware is needed for the installation leaving the driver with extensive leg room. Likewise Menox is not in the way of knee air bags. With no protruding bars or bolts, access in and out of the car is trouble-free.

## Easy and multi-purpose

When choosing the multi-function grip, the driver maximizes the ability to control the car operating headlights, turn indicators, wipers or wiper/washer and horn from the same central place, the Carospeed Menox Hand Grip. This way, any function can be used at the same time as the brakes and accelerator.





## Safe and Stylish

Thanks to Menox's advanced design, each control is ergonomic, conforming to a person's natural hand-wrist-arm motion. The function buttons are situated in a safe place and engineering has simplified the range of the Carospeed Menox Hand Control; pushing forward to brake, pulling back to accelerate.

Each Carospeed Menox handle comes fitted with a brake latch to hold the brake pedal down. In this way hands are freed at traffic lights to change gears or tune the radio. Cruise Control and horn can be operated from this same rocker switch. An optional Gas pedal holder frees the hand reducing muscle fatigue and allowing the driver to concentrate on driving, improving traffic safety significantly when driving at highway speed.

Menox hand controls are designed to compliment all vehicles interiors. From our product selection you will find suitable colours for sedans to vans, as from sports to collector cars upholstery. This allows for Carospeed Menox hand control to go unnoticed by blending into the car's interior design.



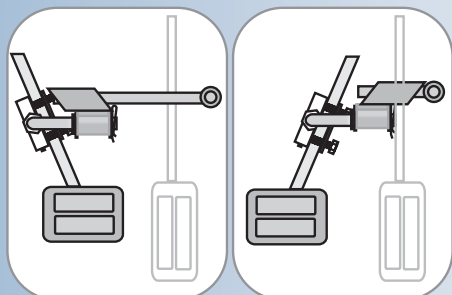
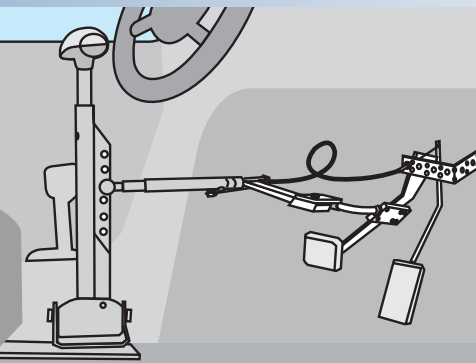
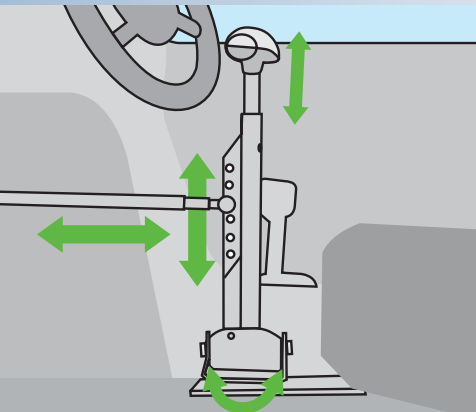
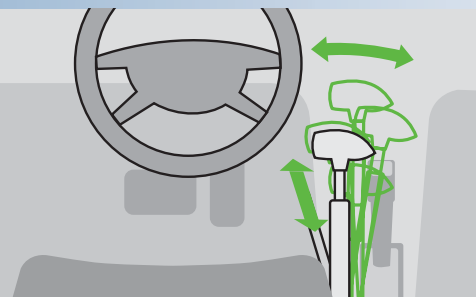
## Hill Holder

Every Menox hand control is equipped with a Hill Holder. When engaged, the brake latch keeps the brake pedal in a braking position. This function eases the shifting of gears allowing the driver to freely shift from park to drive keeping the brake applied.



## Cruise control

The cruise control can be installed to work simultaneously with the vehicle's own cruise control system or be inserted as a totally new function.



# The Carospeed Menox Hand Controls

## Adjustability for individual needs

It is only obvious that drivers have many different driving positions. One may want to hold the steering wheel the same time as accelerating, while another may want to rest their elbow on the console and use the control with the palm of their hand.

The universal Carospeed Menox hand control can be installed to both the right and left side of the car. Menox's engineering enables the hand control to be effortlessly adjusted to every individual driver's needs. Likewise features can be added to the hand control at a later date as the driver deems necessary.

The grip can be vertically adjusted 15cm (6 in) and the shaft can be tilted 95-105 degrees. Each personal adjustment; height of the grip and the right momentum can be achieved for each individual. The range of motion is also amazingly smooth. The power transmission tube allows for the sliding front/back personal adjustments of 7cm (3 in). The tube going to the pedals is smartly equipped with a 7cm (3 in) threaded adjustment. While the ball and fork joint allow for the power transmission tube to be installed as close to the center console as possible. The significance of all of these personal adjustments equal more leg room for the driver.

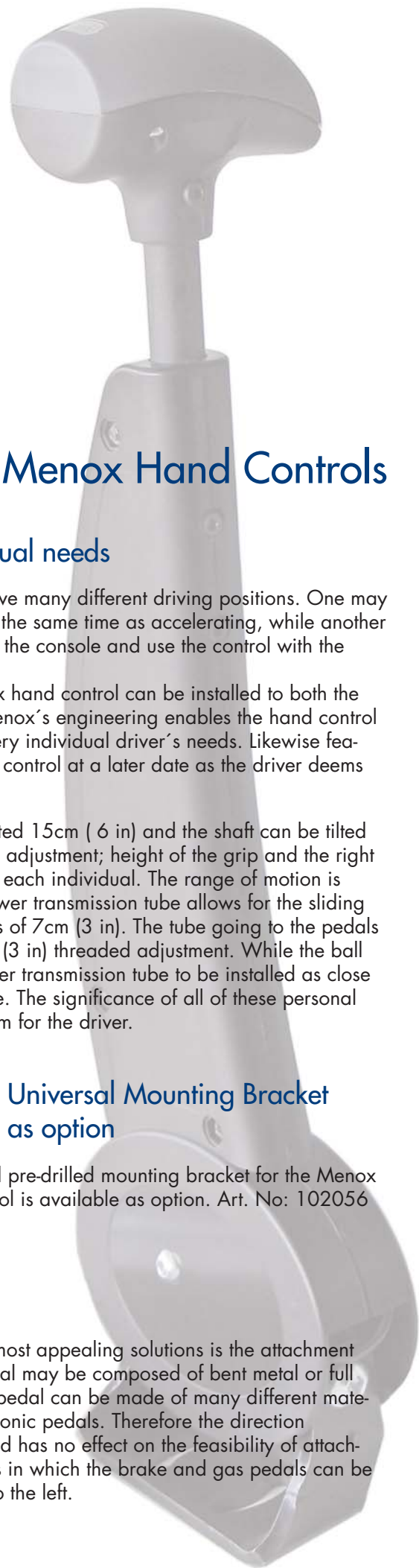


## Universal Mounting Bracket as option

A universal pre-drilled mounting bracket for the Menox hand control is available as option. Art. No: 102056

## Pedal attachments

One of the Carospeed Menox most appealing solutions is the attachment of the pedals. A cars brake pedal may be composed of bent metal or full metal. Likewise the accelerator pedal can be made of many different materials, from metal to plastic electronic pedals. Therefore the direction in which the accelerator is turned has no effect on the feasibility of attachment. There are dozens of ways in which the brake and gas pedals can be attached, even when bending to the left.





## Carospeed Menox Standard

Delivered with a grey handle and the slim designed hard cover in black plastic.

Uses Product Art. 102013 LHD or 102014 RHD



## Build your own Carospeed Menox

Delivered without the upper cover for the handle and without the lever cover. Choose your own grip and cover to suit your personal style.

Uses product Art. 102064 LHD or 102065 RHD



# The Carospeed Menox Options

## Multifunction as option

Add a **4-way** Multifunction Relay box: 102025 for the primary electrical functions.

The Multifunction buttons installed inside the handle.



### Features



Or choose an **8-way** Multifunction Relay box: 102057 for the primary electrical functions plus the ability to add interval, speed, automatic stop and hazard to the electrical functions.

## Your own choice

Menox hand controls are a personal solution just for you and can be tailored according to the driver's personal needs and desires. The additional features are connected hand-in-hand with the vehicle's original functions.



## Carospeed Menox Gas-holder as option

This is an additional feature, for vehicles that don't have a cruise control and can easily be added to all models. The Gasholder Art: 102024, keeps the gas in place but allows for acceleration and deceleration. The Gasholder does not interfere with the ability to brake.

# Steering knobs



## The adapter

the Menox adapter with quick release fastening for the different knob models.

Art. 102027 RBAG

## Model Low

The low design allows for the fingers to be in constant reach of the turn signals, cruise control, etc. at the same time. Available in 4 colour choices.



## Model Round

The round knob is available in two dimensions; 50 mm and 40 mm. Available in 4 colour choices.



## Model M-Standard

Uses the same handle as the Hand Control, for individuals seeking compatibility with the Hand Control.

Available in 4 colour choices.



## 2- and 3-pin

A 2-pin (art. 102058) or a 3-pin (art. 102059) steering device for individuals with impaired hand function. Can easily be reshaped to fit the hand.

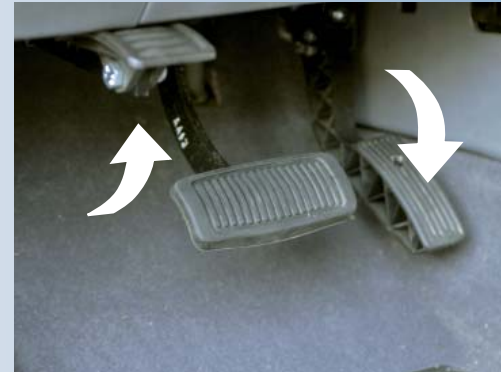
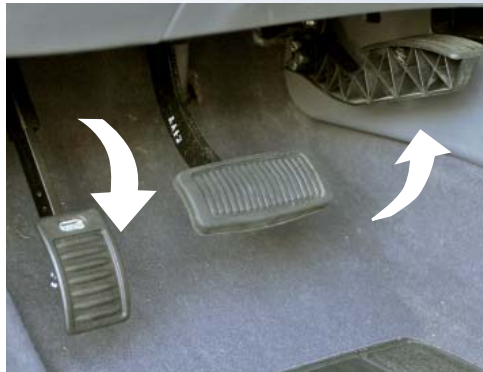


# Left Foot Accelerator

## Flip-Up model

The Menox Left foot accelerator (art. 102044) and the original accelerator are equipped with a hinge allowing for the desired pedal to be gently pushed into place while the other can be neatly tucked away.

The force applied to the original accelerator is transferred through a high quality Teflon coated cable.



## Quick Release model

The Menox Left foot accelerator Quick Release (art. 102045) was developed to control the cars original accelerator with the left foot. The Left foot accelerator is compatible with vehicles driven from either the right or left side of the vehicle.

The Menox pedal is universal and can be installed into most makes and models.

When not in use, the left foot accelerator must be removed from the driver's side floor space so that it will not interfere when other individuals use the vehicle.



## Pedal Extensions



### ◀ The Stamp Extension

The Menox Stamp Extension, brings the original pedals closer and can be installed into both automatic (art. 102049) and manual (art. 102050) vehicles. Adjustments can be made for distance, height, and the desired space between pedals. They are also fit with a quick release, to be easily removed. This is the ideal pedal for an extension of 10-30 cm (4-10 in).

The package includes the raised surface, installable at height of 5-20 cm (2-8 in). The quick attach/release is conducted with a finger screw.



### ◀ The Mini Stamp

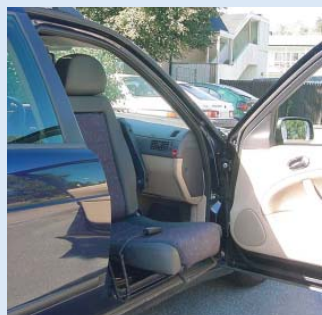
The Menox Mini Stamp provides an extension of 3-9 cm (1-3 in). The ease of movement allows for the pedal to be lowered into place and tucked away when not in use.

Models are developed for both automatic (102047) and manual (102048) vehicles.

## Pedal Guard



▲ The Menox Pedal Guard (art. 102046) protects the OEM pedals from being engaged when a Hand Control is used. It has a floor-mounted quick release, for a quick removal. Maximum force exerted on the Pedal Guard should not exceed 50 Kg.



Autoadapt  
for your  
independence



[www.autoadapt.com](http://www.autoadapt.com)

[www.autoadapt.fr](http://www.autoadapt.fr)

[www.autoadapt.de](http://www.autoadapt.de)

[www.autoadapt.co.uk](http://www.autoadapt.co.uk)



**Autoadapt AB**, Åkerivägen 7,  
S-443 61 Stenkullen, Sweden  
Tel: +46 (0)302 25400 Fax: +46 (0)302 25407  
E mail: [contact@autoadapt.se](mailto:contact@autoadapt.se) [www.autoadapt.com](http://www.autoadapt.com)

**Autoadapt UK Ltd**, Unit 4, Windsor Industrial Estate,  
Rupert Street, Aston, B7 4PR Birmingham, UK  
Phone: 0121 3335170 Fax: 0121 3596194  
E mail: [contact@autoadapt.co.uk](mailto:contact@autoadapt.co.uk) [www.autoadapt.co.uk](http://www.autoadapt.co.uk)

