

# menox

Stamp Pedal extension

A.345 and 346

Manual



Contents:

Section	Subject	Page
1	Table of Contents	
2	Introduction	3
3	General Information	3
4	Stamp Pedals	3
5	Instructions for use	4
6	Installation Instructions	4
6.1	Installation sequence	5
6.2	Location of Stamp	5
6.3	Rod Positioning	5
6.4	Preparation of Assembly Plate	6
6.5	Adjusting the Pedals height and Spacing	6
6.7	Fastening the Pedals	7
6.8	Fastening to the OEM Pedals	7
7	Maintenance	8
7.1	Stamp Pedals Inspection	8
8	Warranty	9
9	Stamp Drawing	10
10	Stamp Parts List	11
11	Certification	12



Manufacturer



**Turvax Oy / Ltd**

Tarjusojantie 9  
FIN-90450 KEMPELE  
FINLAND  
Tel. +358 8 513 624  
Fax +358 8 5563 803  
e-mail: menox@menox.org



...for more top quality driving aids:

[www.menox.org](http://www.menox.org)

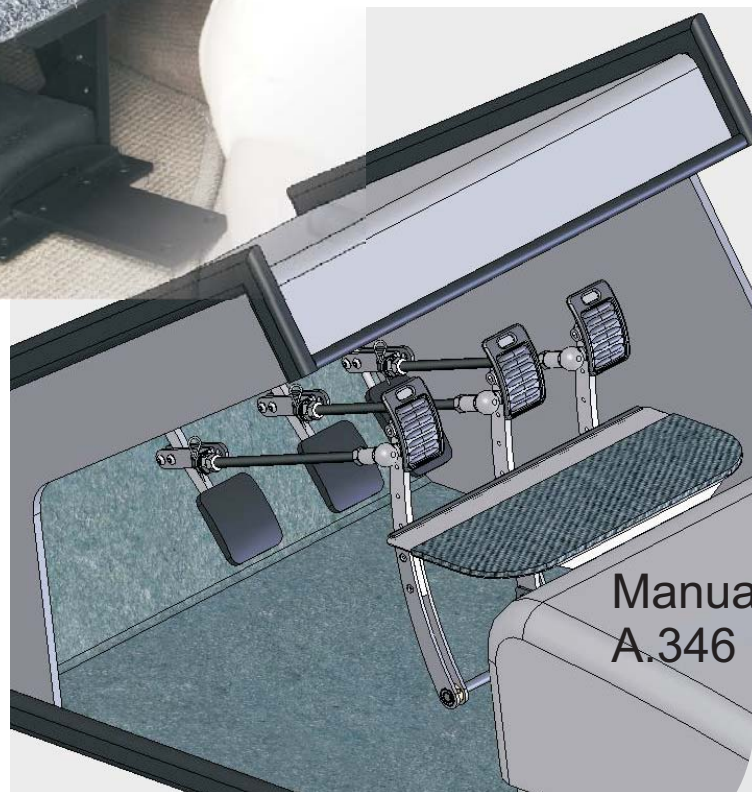
Congratulations! You have purchased a Menox Stamp Pedal Extension. We wish you pleasant and safe driving experiences.



Automatic  
A.345



**ATTENTION!**  
Place the sticker in a visible place on the vehicle. Suggested Driver's side window



Manual  
A.346

## 2 Introduction

This instruction manual must be read and its instructions understood before installing and using Stamp Pedals.

Keep this manual for later use. If the manual is not correctly filled in, the manufacturer is released of liability.

The manufacturer is not responsible for incorrect installation. For safety reasons, only Turvax Oy or a trained and authorized installer may install and service this product.

## 3 General Information

The Menox Stamp pedals is a driving device enabling short people to use the vehicles' original pedals.

Menox is a safe and tested product. It can be installed in automatic and manual vehicles and adjusted according to the driver's needs. Stamp pedals require that an individual assembly plate must be installed.

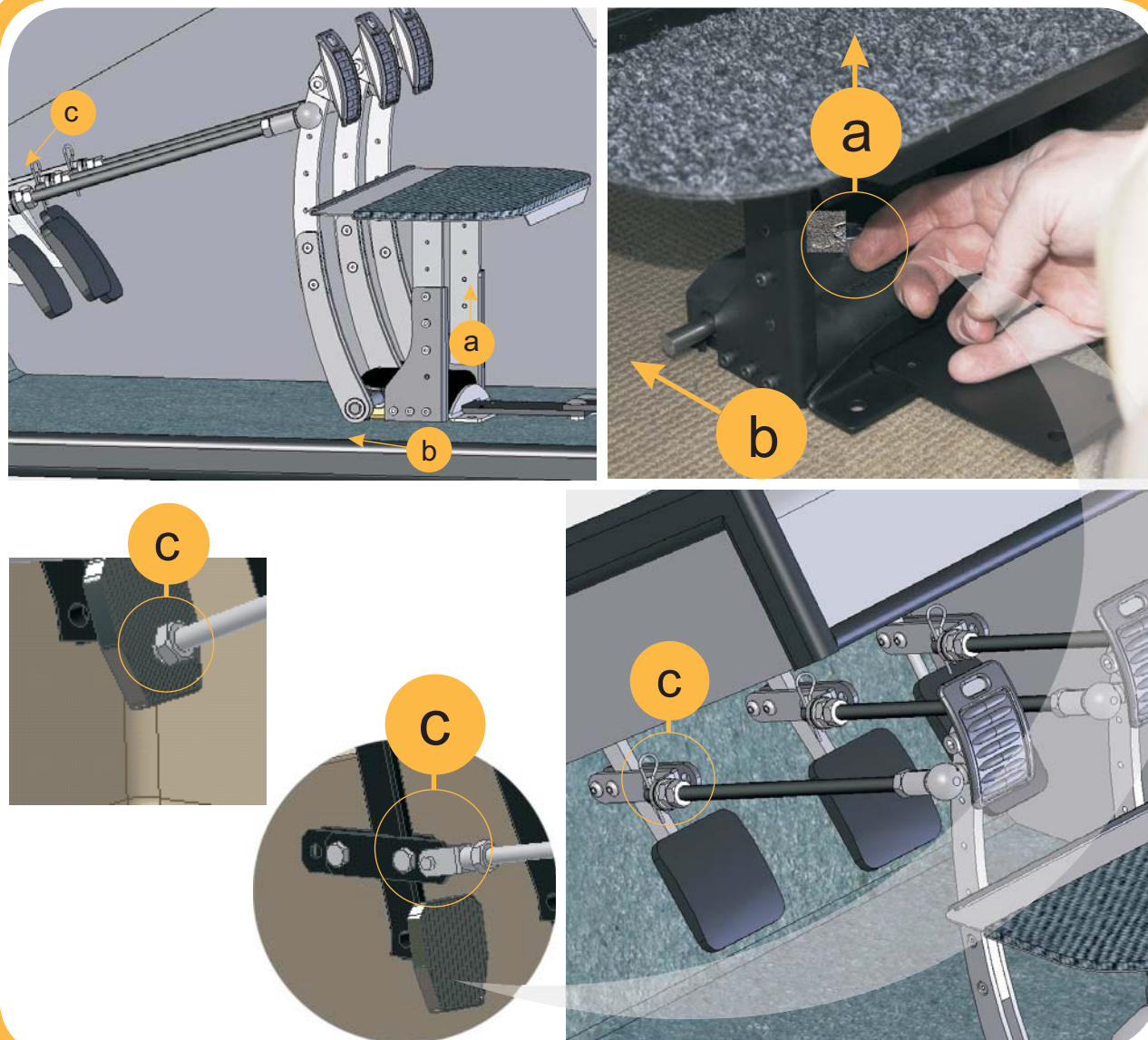
## 4 Stamp Pedals

With the use of Menox Stamp pedals, the vehicle's original pedals are brought closer. Stamp pedals can be installed into both automatic and standard vehicles.

Stamp pedals can be adjusted for distance, height, and the desired space between pedals.

Stamp pedals are also fit with a quick release, enabling the device to be easily removed and other individuals use of the vehicle.





Menox Stamp is easy to remove when others must use the same vehicle. Release the clamp spring (c) and therods from the pedals. Pull the quick release button (a) upwards while simultaneously sliding the pedal platform forward. Re-installation takes place in reverse sequence.

## 5 Instructions for use

Menox stamp pedals allows for shorter people to control the vehicle's original pedals. Therefore, the motion of the pedals must be the same as in the vehicle's original.

In a rare case of an accident, the device can not be used before it has been inspected and approved by a dealer or the manufacturer.

When exiting the vehicle it is important to note that the pedals are not put under any unnecessary strains or bumps.

Only people who are authorized can use this device.

After installation, the vehicle must be inspected.

Driving with Menox Stamp pedals takes place just the same as with the vehicles original pedals.

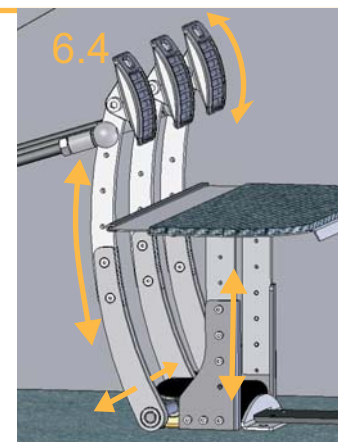
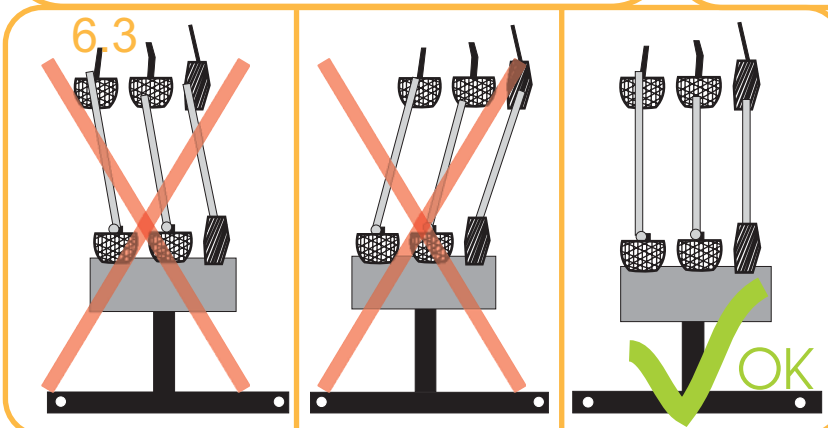
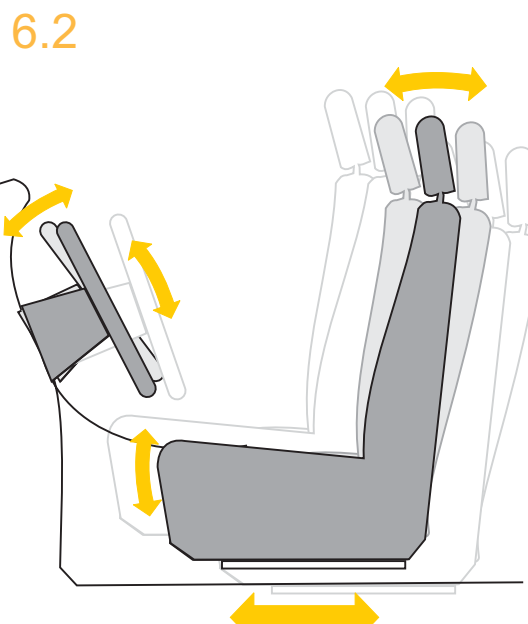
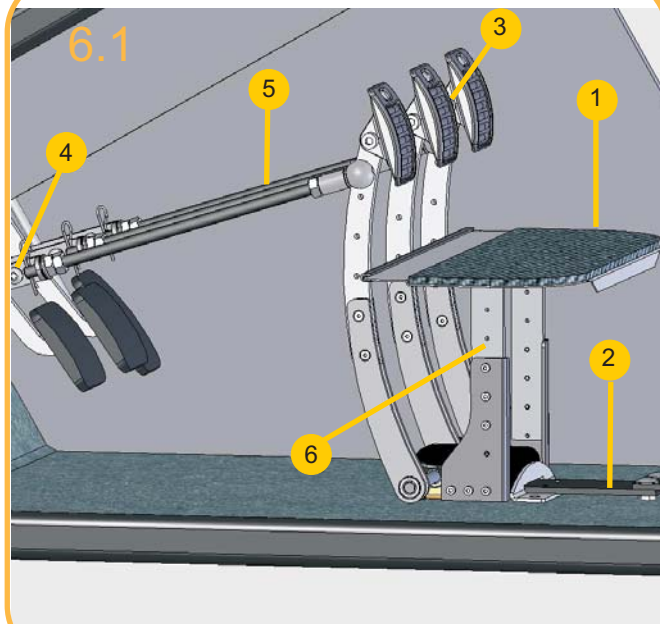
In a situation where the device seems too stiff or too loose, immediately contact the installer

## 6 Installation instructions

Before beginning the installation process check that the product has not been damaged in delivery. Read the installation instructions fully before installation so that you can establish a clear picture of how the device works.

Make sure that the vehicle is properly secured preventing it from rolling during installation.

Never go under a vehicle before you have ensured it safe.



## 6.1 Installation sequence

1. Determine where to install the device
2. Prepare the assembly plate
3. Adjust the height and spacing of pedals.
4. Fasten to original pedals
5. Final adjustments.

## 6.2 Location of Stamp

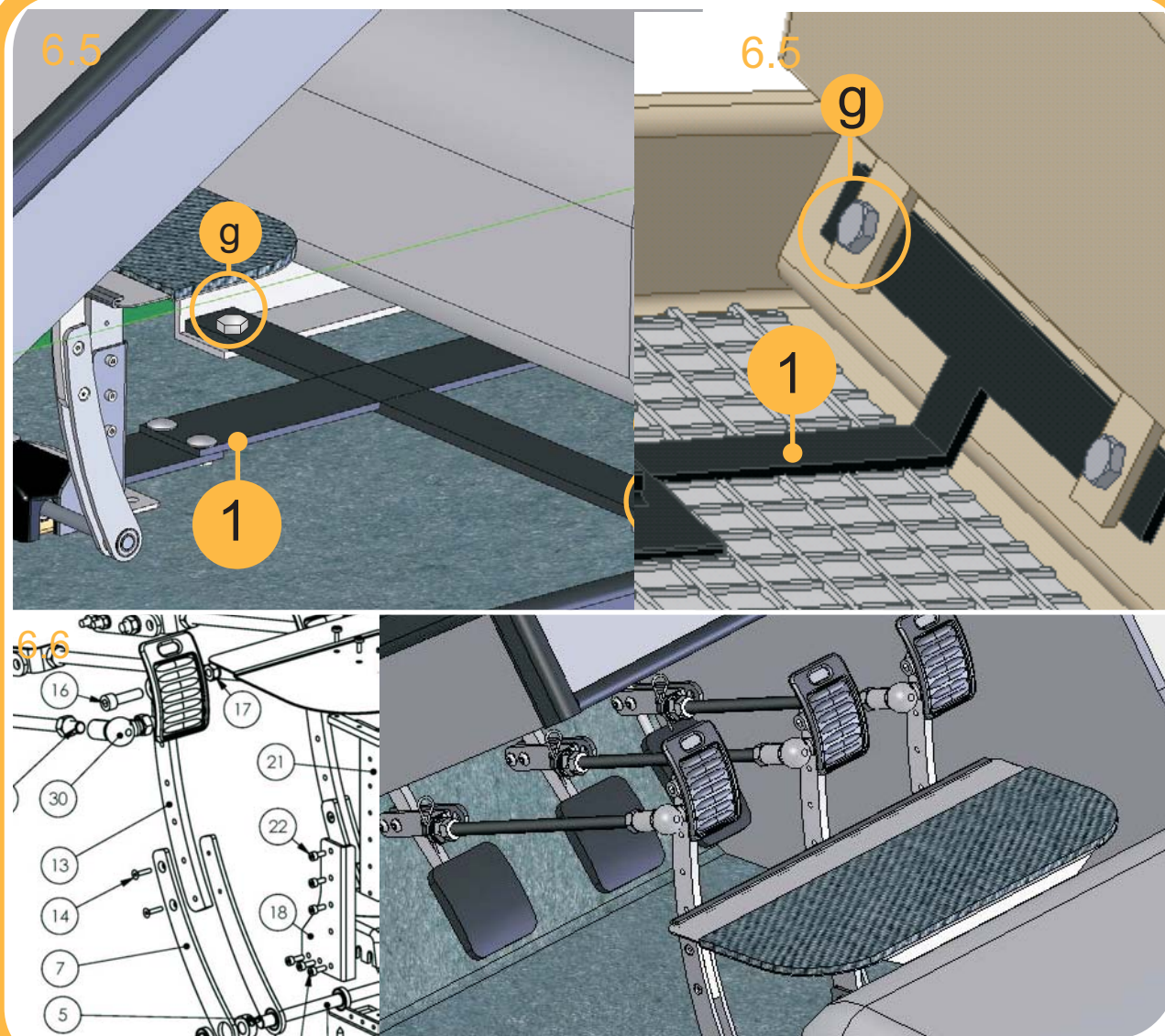
To find the correct location for the Stamp pedals, the customer must be seated in their normal driving position. Make sure that any pillows or boosters are taken into consideration.

Assemble the Stamp pedals tentatively, in other words fasten the pedals. Place the Stamp stand on the floor of the vehicle and make tentative adjustments. You may need to shorten the bars (marked as 6) used to adjust the height of the stand. Make sure that you don't over shorten the bars. There must remain a minimum 50 mm of vertical adjustment. Also tentatively adjust the position of the pedals. After finding the correct position, remove the stamp. Leave the assembly plate on the floor and mark position 2.

## 6.3 Rod Positioning

The Rod connecting the pedals must be parallel to one another as in fig 6.3





#### 6.4 Preparation of the assembly plate

In order to correctly fasten the stamp, assembly plate (1) must be prepared. The assembly plate is preferably fastened under the seats bolts (g). By exchanging the seats bolts for longer ones, we can achieve the same strength for the bolt.

Sometimes it is feasible to fasten the assembly plate by placing a bolt through the floor of the vehicle. For extra stability, bolt plate 25 (pg 10) to the floor.

The assembly plate consists of 2 plates. Use bolts 28 and nuts 17 (pg. 10 of manual) to fasten the 2 plates together.

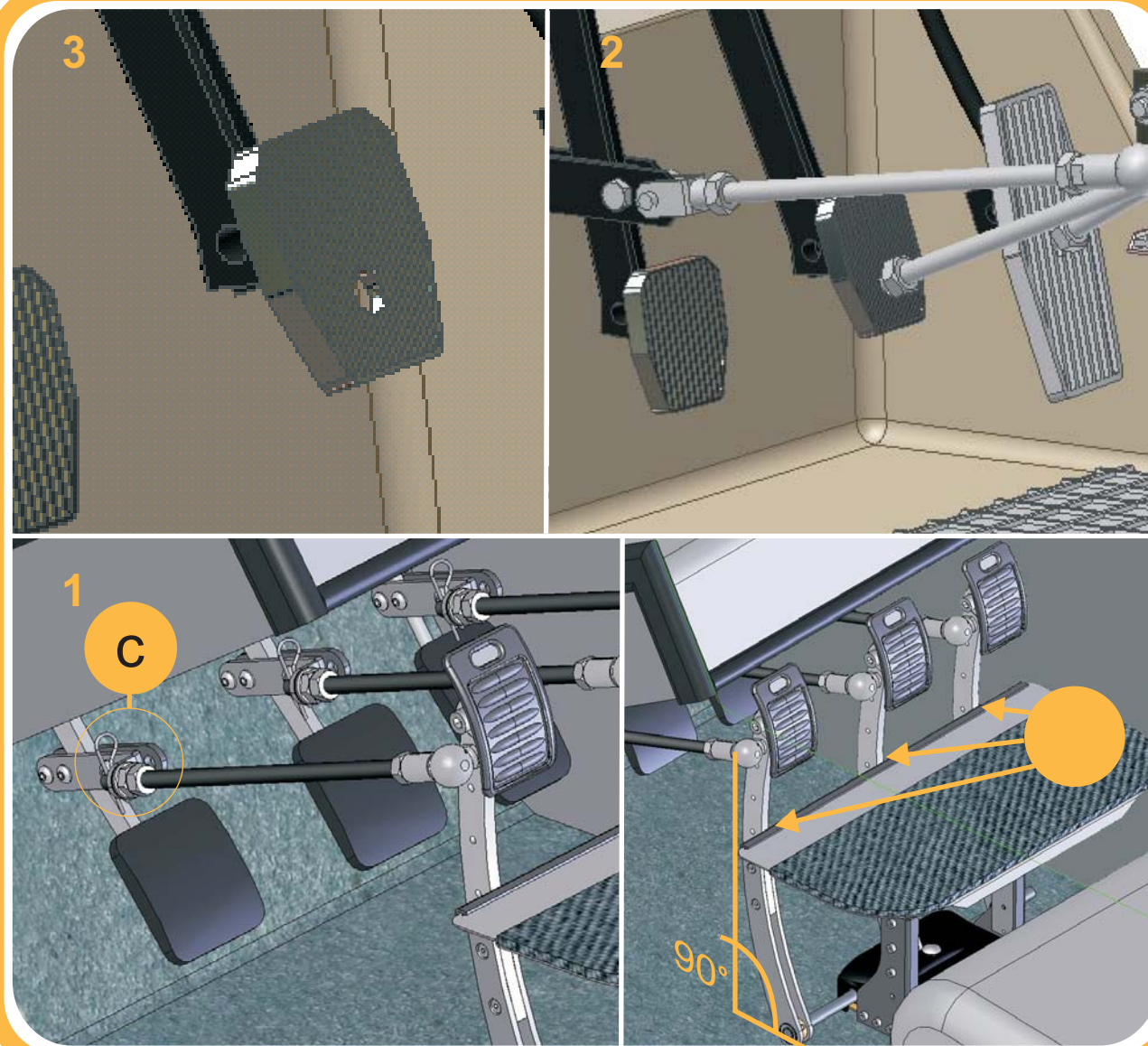
Ensure that the assembly plate is of high quality, this part is not included in the manufacturer's guarantee.

#### 6.5 Adjusting the pedals height and spacing.

Place/fit the pedals in place adjusting the spacing (sideways adjustment) so that bars extending to the pedals are straight/parallel fig. 6.4.

To adjust the pedals sideways open screw 5 (fig 6.6) and screws 14 so that both plates "7" are free. Once the correct place is found fasten screw 5. Then fasten screws 14. When fastening screws 14, hold the bottoms of plate 7 against the spacer 4 (pg. 10). This allows for the pedal to be one tight package. If the plates are not held snug against the spacer 4 it may cause unnecessary gapping.

The height of the pedals is adjusted by loosening screws 14. Adjust the pedals to the right height and then re-fastening the screws.



Always check the Stamp Pedals regularly (same time as the vehicle's own service), that no parts are loose or too tight. Also insure that bolts, nuts and screws are tight enough. In the case that the pedals must be unattached and attached, check that the ball and fork joint ring locks and the threaded tubes bolts are tight.

## 6.6 Fastening the Pedals.

There are three different ways to fasten the Stamp pedals to the OEM pedals.

1. Fasten the assembly plates and place the rod through the hole.

2 Use the same assembly plates but use the fork joint to attach.

3 Drill a hole (12mm) in the pedal and insert the rod through the hole.

**Attention!** Not all countries allow drilling holes in the pedal. Please check the laws of your specified country.

The clutch usually requires a longer range of motion. Therefore, keep in mind that the higher the point of fastening, the shorter the range of motion will be.

## 6.7 Fastening to the vehicle's own pedals.

Cut the threaded tube to the right length. First make sure that the Stamp pedals rest against the Stamp platform. Measure the distance from the ball joint to the front side of the OEM pedal. Add approximately 3cm (1 inch) or make sure that the rod extends far enough through the hole so the spring clamp can be fastened. Note you may have to drill a new hole in the rod for the spring clamp.

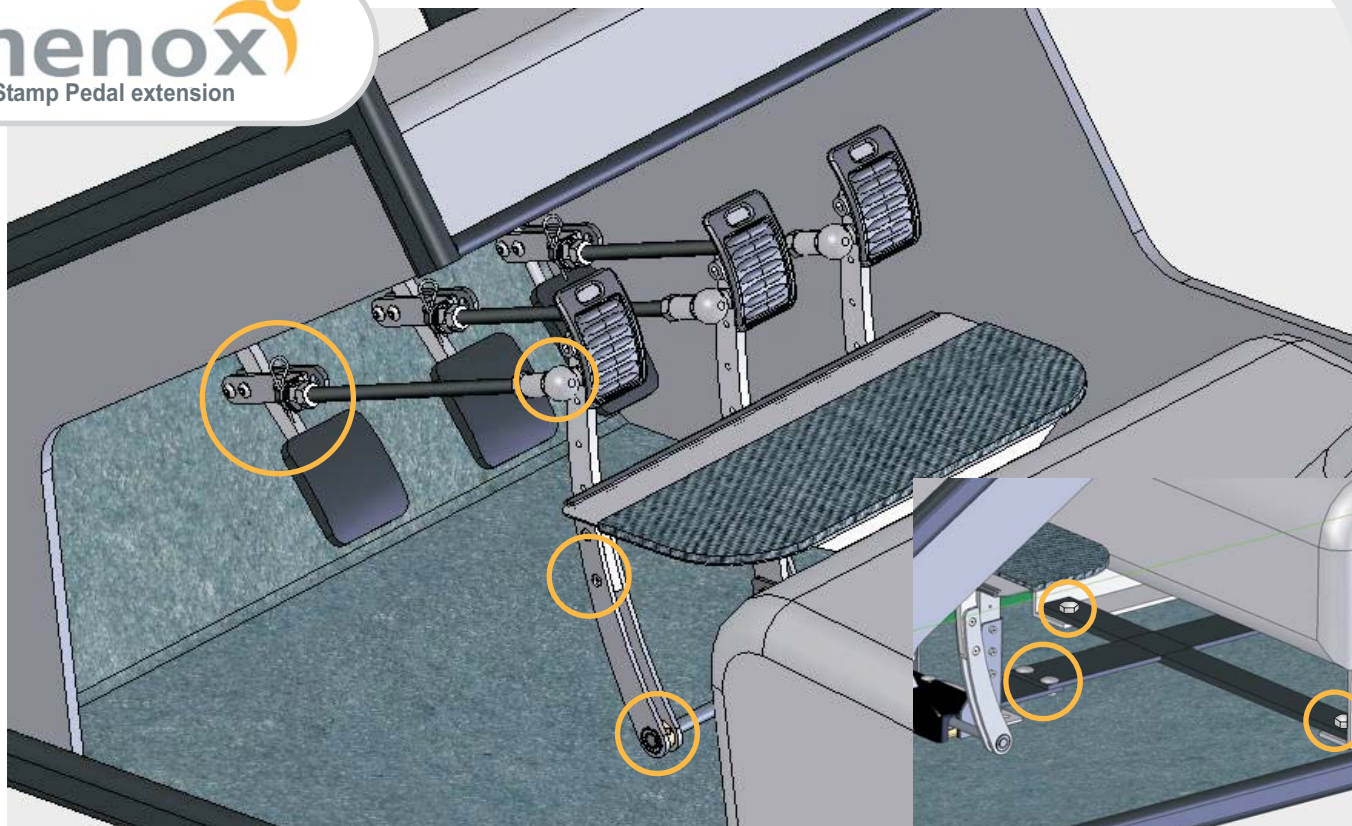
Cut the plastic cover and place it on top of the threaded tube.

Fasten the rods to the gas, brake and clutch pedals with the desired method. Ensure that the ball joints are tightly fastened to the stamp pedals and remove any play in the rods by adjusting the nuts "33" (pg 10)

Make any final adjustments and tighten all bolts and nuts.

Ensure that the pedals have enough room for movement and that the stamp pedals do not lock or cling to any other parts.





## 7 Maintenance Guide

All mechanical devices should be serviced and that includes Stamp pedals. The purpose of scheduled maintenance is to prevent the product from malfunctioning while driving.

Servicing takes place in connection with a car's scheduled maintenance. It can be done by a Menox installer, an automobile mechanic or anyone with sufficient expertise.

### 7.1 Stamp pedals Inspection.

Inspect the parts circled in the picture to the left. Check that the bolts, nuts, and screws are tight. Clean and oil joints if necessary. Check for any unnecessary looseness in the base and platform. Inspect the Quick release device that it locks and releases properly. If anything seems out of place or peculiar please contact the manufacturer for further advice.

[illegible]



## 8 Menox warranty

### 8.1 Duration and terms of warranty

#### 8.1.1 Duration of warranty

a) We guarantee a warranty two years for the product.

#### 8.1.2 Extent

Our warranty covers all faults occurring during manufacturing and materials.

### 8.2 Terms

The warranty is valid provided that:

a) Installation is performed by an authorized mechanic.

b) A warranty repair be negotiated by the manufacturer/dealer of the product prior to action of repair

c) The use, maintenance and physical conditions in which the product has been used have been consistently normal and the operation instructions have been followed and scheduled servicing has been performed.

### 8.3 Proper actions in warranty cases

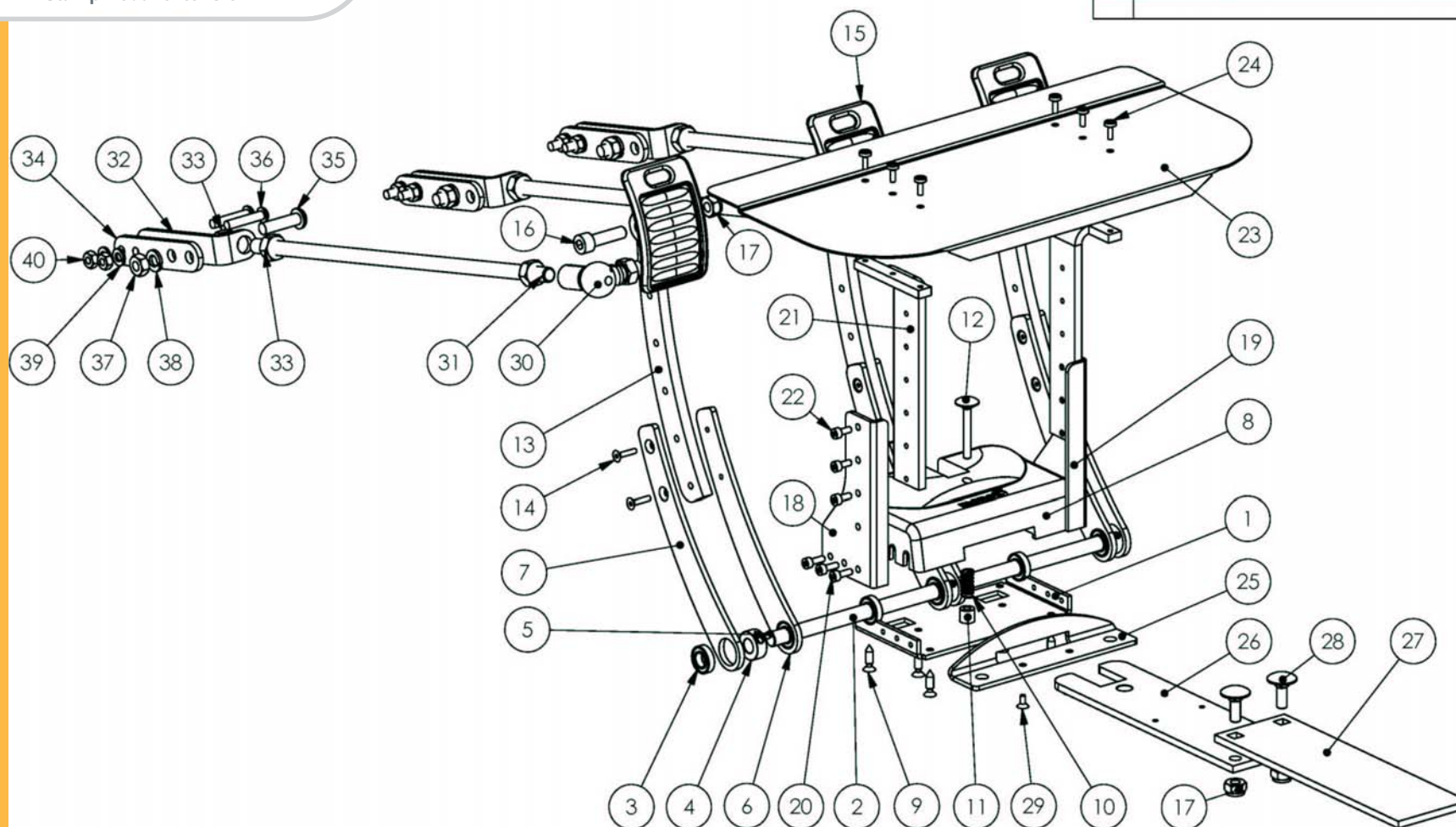
In warrant cases, always contact a garage or mechanic authorized to perform the warranty repair.



8.3.1 The defective product is returned to the manufacturer and after they have examined it, the repaired or new product is sent to the customer.

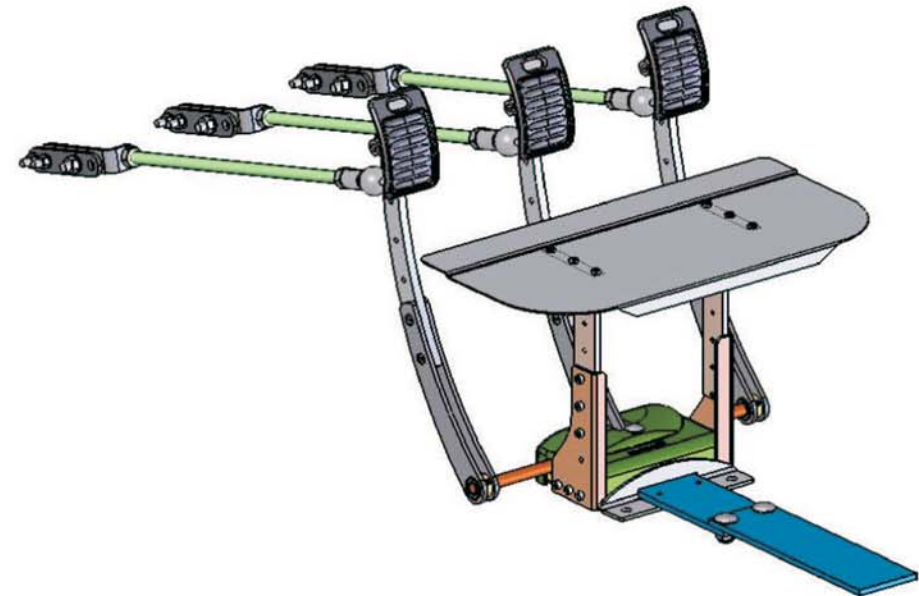
8.3.2 In the case that there is need for compensation for work, it must be negotiated with the manufacturer. Compensation can amount to a maximum of one (1) hour at the regular rate of the garage/mechanic. Compensation is paid as a reduction from the purchase bill/receipt.

8.3.3 The warranty does not cover indirect costs such as shipping or travel expenses or malfunctions caused by normal wear.

Rev.	Muutos	Nimi	Päiväys
1		PJo	10.1.2006



	Massa	Projekti 474	Suunnittelija PJo	Pvm 19.09.06
Tätä asiakirjaa ei saa ilman meidän kirjallista lupaamme jäljentää. Sitä ei myöskään saa esittää toiselle tai muutoin asiattomasti käyttää. This document must not be copied without our written permission, and the contents thereof must not be imparted to a third party or be used for any unauthorized purpose. (c) JAHOTEC 2005		Asiakas Menox	Tarkastaja	Pvm
		Asiakkaan piirustusnumero	Hyväksyjä	Pvm
 Stamp Pedal extension		Nimitys Stamp	Liittyy	
			Piirustusnumero Art 346	Revisio 1



1	2	3	4	5	6
41	Kuusiokoloruvi		M5x12		3
40	Kuusiomutteri		M6		6
39	Jousilaatta		M6		6
38	Jousilaatta		M8		3
37	Kuusiomutteri		M8		3
36	Kupukantaruvi Wurth 1084-630				6
35	Kupukantaruvi Wurth 1084-830				3
34	Pedal Connecting Plate	346_100			3
33	Kuusiomutteri		M10		9
32	Pedal Fastening Plate	346_090			3
31	Threaded Rod M10x330	346_130			3
30	Kulmanivel MBO 10 03 4416 8002				3
29	Kuusiokoloruvi		M4x8		2
28	Lukkoruvi		M8x20		2
27	Fastening Back Plate 2	346_130			1
26	Fastening Back Plate	346_080			1
25	Fastening Part	305_100			1
24	Uruuvi		M4x10 -Z		6
23	Platform Plate	346_110			1
22	Kuusiokoloruvi		M4x10		6
21	Platform Fastening Bracket	346_120			2
20	Kuusiokoloruvi		M4x12		3
19	Platform Leg R	346_070			1
18	Platform Leg L	346_060			1
17	Lukitusmutteri		M8		5
16	Kuusiokoloruvi		M8x30		3
15	Menox Pedal				3
14	Kuusiokoloruvi		M4x16		6
13	Lever Top Part	346_050			3
12	Lukkoruvi		M6x40		1
11	Lock Shaft	305_050			1
10	Compression Spring Lesjofors 1311				1
9	Ruuvi Wurth 0166 518				6
8	Body	305_040			1
7	Lewer Lower Part	346_040			3
6	Threaded Lower Connecting Part	346_030			3
5	Pidätinruvi		M5x6		3
4	Lock Casing	346_020			3
3	Ball Bearing 6800ZZ_10x19x5				8
2	Pedal Axel	346_010			1
1	Metal Frame	305_010			1
OSA	NIMITYS	PIIR_NO	STANDARDI	MATERIAALI	MITAT
					KPL

 <small>Tätä asiakirjaa ei saa ilman meidän kirjallista lupaaamme jäljentää. Sitä ei myöskään saa esittää toiselle tai muodon asiantomasti käyttää. This document must not be copied without our written permission, and the contents thereof must not be imparted to a third party or be used for any unauthorized purpose. (c) JAHOTEC 2005</small>	Massa	Projekti <b>474</b>	Suunnittelija <b>PJo</b>	Pvm <b>19.09.06</b>
		Asiakas <b>Menox</b>	Tarkastaja	Pvm
		Asiakkaan piirustusnumero	Hyväksyjä	Pvm
		Nimitys <b>Stamp</b> Bill of material <sup>1</sup>	Liittyy	
			Piirustusnumero <b>Art 346</b>	Revisio <b>1</b>



### Manufacturer's Certificate

I certify that the Menox Stamp Pedal Extension has been designed and manufactured in Turvax Oy, Kempele Finland. Throughout the design and manufacturing, special attention has been placed on safety and ease of use of the product. Menox Stamp Pedal Extension's are manufactured in accordance with Finnish guidelines (703/98) 103§, ISO/TC22/WG4 and EU directives (74/60/ETY, 78/632/ETY).

Respectfully yours,

*Juha Paananen*

CEO

Stamp Pedals  
Serial Nr. Sticker

**menox**  
Driving Aids



For successful driving

[www . menox . org](http://www.menox.org)